



PREVIEW

SCHEDULE 2025



ILLINOIS STATE
UNIVERSITY
Illinois' first public university



WELCOME TO PREVIEW

We are so excited to have you join us on campus for your freshman orientation to Illinois State University! We understand that this is an exciting—and possibly overwhelming—time in your life. We are here to help make the transition into college as easy as possible. Over the next couple days, you will meet people who are ready to answer your questions, give you information, and help you start your new journey. We hope you leave here feeling more confident in your next steps and more excited to be a Redbird!



Download the official Illinois State University app. Find dining menus, class schedules, maps, Redbird athletic events, finances, and well-being tips.



TOP 5

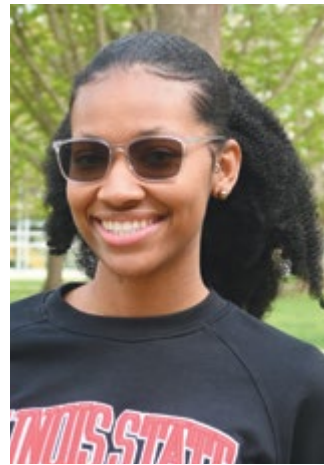
Preview tips

- 1. Don't be shy!** We promise you aren't the only one who is nervous about this new experience. Take this opportunity to chat with other students in your group and start creating new connections.
- 2. Ask questions of your Preview guide, your advisor, and campus staff.** No question is too crazy! Not sure what to ask? That's OK! Here are some great starter questions: What should I be asking about this? What was your experience with this? Or what are the most important things I need to know right now?
- 3. Know your ULID and password.** You will need to know these for logging into the ISU app and registering for classes.
- 4. Stay hydrated!** There are water bottle filling stations throughout campus. Feel free to utilize these as needed!
- 5. Take notes!** There will be a LOT of information given to you, and it can be overwhelming. Use this schedule book to jot down notes, questions, and people you want to remember.

MEET YOUR PREVIEW GUIDES



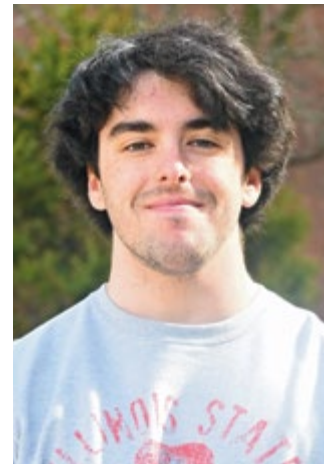
Kyla Bennett



Jayla Brown



Jonathan Carr



Colby Carroll



Tanna Frederick



Dion Greer



Brody Haas



Hannah Hembrough



Kyira Hayes



Will Khayyat



Ashley Lamberti



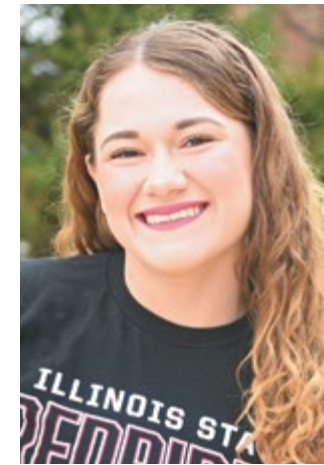
Valerie Mattsey

Get to know your guides

These folks will be with you throughout Preview. They're helpful, knowledgeable, friendly, and fun.



Miles Maxwell



Marisol Nuñez



Mia Richardson



MJ Shorter



Tifey Shosanya



Sam Skinner



Logan Sollars



Nate Staddler



Central Preview staff: *from left*, Noah Johnson, Aniyah Weddington, Trinity Schiff, Kate McConville.

Professional staff: *Not pictured*, Corey Burgess, Ryan Downing, Kelsie Riblet; Graduate assistant: Amy Orona

PREVIEW STUDENT SCHEDULE

DAY 1

8:45 a.m.
Check-in
Milner Library

Yay, you're here! Make sure you have your name tag, group assignment, and schedule booklet, then hop in line to get your ID picture taken before you meet your Preview guide and group.

9-10:30 a.m.
Preview guides' small group meetings
Milner Library

Get to know your Preview guide and other Preview students you will be hanging out with for the next two days, get a breakdown of the schedule, and ask any questions you have about Preview!

10:45 a.m.
Welcome to Preview
Center for the Performing Arts

Join parents and guests to perform your "cheer," before being greeted by University College and learning about academics at Illinois State.

11:55 a.m.
Lunch with guide and group
Watterson Dining Commons

Your Preview guide will escort you to the Watterson Dining Commons where you will grab lunch from the station of your choice and eat with your group and other Preview students. Venues at Watterson Dining Commons include Homestyle, The Wok, Toasted Tortilla, Fresh Bites, Station 9, Grill, Pizza and Pasta, Salad Bar, Deli, and the Bakery. *(Note: some venues may be closed, and options will vary by day.)*

12:50-12:55 p.m.
Event Management, Dining, and Hospitality session
Watterson Dining Commons

Figuring out how the dining center works can be a bit overwhelming your first few times there. Learn from the dining center staff the ins and outs of how to navigate the dining center so your first meals on campus can be more enjoyable.

1:10-2:20 p.m.
Academic advisement meeting
State Farm Hall of Business

Meet your academic advisor for a academic planning session. During this session, you will discuss your academic path and select the courses you plan on registering for tomorrow.

2:35-3:05 p.m.
College/department meetings
Various locations

This session provides you with an opportunity to meet with representatives from your department to learn about requirements and opportunities unique to your major. Secondary education (high school) teachers and pre-law majors should attend the departmental meetings of their majors (e.g., high school history teacher education majors would attend the History Department meeting). If you were admitted as an undeclared student and are undecided, please attend the undeclared student meeting. If you are admitted as an undeclared student and are leaning toward a certain major, you may attend the meeting of that major.

3:15-4:15 p.m.
Afternoon sessions
Capen Auditorium

Meet back up with the group in Capen Auditorium to review what you've learned so far and to learn more about:

- **Mental health**
While at Illinois State, you might encounter unexpected challenges, leading to confusion, anxiety, anger, or sadness. Life events can be overwhelming, but remember, you don't have to face them alone. Come learn about the services offered to students through Student Counseling Services.
- **Housing**
How does the move-in process work? What should you bring to campus with you? Get the answers during this session.
- **Safety**
We know that safety is a top priority for everyone, and Illinois State offers a variety of programs and services to help keep you safe. Learn about those programs, the best ways to protect yourself and your belongings, and meet Illinois State's new therapy "pawfficer"!

4:15-5:30 p.m.
Housing check-in and dinner break
Vrooman Center, Hewett-Manchester Residence Hall

If you are staying overnight in the residence hall, head to Vrooman to get assigned a room (if you have another student you would prefer to stay with overnight, be sure to check in together!). During this check in, you will receive your meal card for your stay, so be sure to head to Vrooman before the dining center!

6:30-7:30 p.m.
Evening session with guide and resident assistant Q&A
Schroeder Hall

Meet back up with your Preview guide and group to find out how to make the most of your first year at Illinois State. During this time, you'll also have a "floor meeting" with an R.A. and get firsthand knowledge of residence hall life from a student who lives in the residence halls.

7:45-9 p.m.
Evening activities
Bowling and Billiards Center

Join Preview guides for bowling and billiards; check out the new state-of-the-art Redbird Esports facility and gaming center; play a board game or cards; or simply sit back, relax, and get to know other students.

Day 2

7-8 a.m.
Housing check out and breakfast
Vrooman Center

8:15-9 a.m.
Student Affairs welcome
Center for the Performing Arts

Get ready to be energized by our Student Affairs office as you learn about these offices and important topics:

- **Multicultural Center**
At Illinois State, we believe everyone belongs, and the MCC has spaces and programs to support all students.
- **Finances, textbooks, and planning ahead**
Where should I buy my books? Do I need any other materials for classes? Are these materials covered by my financial aid? Find out all you need to know during this session.
- **Academic reminders and student dismissal**
Make sure you're paying attention to the final reminders about registering for classes before you leave with your Preview guide. You MUST be in this session in order to register for classes.

9:05-9:45 a.m.
Guide session
Follow your guide

Reconnect with your group to ask final questions and officially join our Redbird community.

9:45 a.m.
Course registration
Follow your guide

Meet back up with your academic advisor to register for you fall classes. This session is for STUDENTS ONLY.

10:45-11:45 a.m.
Redbird Resource and Involvement Fair
Bone Student Center – 2nd floor

See list of participating offices on our website or in the ISU app

Breakout sessions

11:45 a.m.-12:15 p.m.
Textbooks and Course Materials
Bone Student Center, Atrium

11:45 a.m.-1 p.m.
Backpack Drive for the Back to School Alliance
Volunteer and Community Engagement
308 Kingsley Street

Get your questions answered
Before you leave campus, stop by these offices for more information

On-campus jobs
Bone Student Center, 2nd Floor

ISU Share Shop
305 N. School Street

Campus technology Q&A
TechZone, Bone Student Center

Multicultural Center tour
301 S. Main Street

ROTC and Military Services
211 N. University Street

Women, Gender and Sexuality Studies Resource Center
Rachel Cooper Hall 234



Be sure to pick up your Redbird Card ID before you leave campus! The card office is located on the first floor of the Bone Student Center and is open until 4:30 p.m.

COLLEGE/DEPARTMENT

LOCATIONS

College of Applied Science and Technology

Agriculture.....	State Farm Hall of Business.....	132
Community Health Promotion	Schroeder Hall	114
Computer Science	State Farm Hall of Business.....	147
Construction Management.....	State Farm Hall of Business.....	150
Criminal Justice Science.....	Schroeder Hall	236
Cybersecurity	State Farm Hall of Business.....	147
Engineering Technology.....	State Farm Hall of Business.....	150
Environmental Health.....	Schroeder Hall	114
Exercise Science— Allied Health Professions.....	McCormick Hall	260
Exercise Science— Health and Human Performance	McCormick Hall	260
Family and Consumer Sciences		
Teacher Education	Schroeder Hall	201
Fashion Design and Merchandising	Schroeder Hall	201
Food, Nutrition, and Dietetics.....	Schroeder Hall	201
Graphic Communications Technology	State Farm Hall of Business.....	150
Human Development/Family Sciences.....	Schroeder Hall	201
Healthcare Leadership	Schroeder Hall	114
Health Informatics	Schroeder Hall	114
Health Information Management.....	Schroeder Hall	114
Information Systems.....	State Farm Hall of Business.....	147
Integrative Health and Wellness.....	Schroeder Hall	114
Interior Design.....	Schroeder Hall	201
Kinesiology and Recreation	McCormick Hall	260
Medical Lab Science	Schroeder Hall	114
Network and Telecommunications		
Management	State Farm Hall of Business.....	147
Occupational Safety and Health	Schroeder Hall	114
Physical Education—Teaching	McCormick Hall	260
Pre-veterinary	State Farm Hall of Business.....	132
Public Health.....	Schroeder Hall	114
Recreation and Sport Management.....	McCormick Hall	260
School Health Education.....	Schroeder Hall	114
Sustainable and Renewable Energy	State Farm Hall of Business.....	150
Technology	State Farm Hall of Business.....	150
Technology and Engineering Education	State Farm Hall of Business.....	150
Therapeutic Recreation	McCormick Hall	260

College of Arts and Sciences

Anthropology	Schroeder Hall	204
Biochemistry	Julian Hall	226
Biological Sciences.....	State Farm Hall of Business.....	133
Chemistry	Julian Hall	226
Communication Sciences and Disorders	State Farm Hall of Business.....	148
Communication Studies	Fell Hall	280
Economics	Stevenson Hall	425
English.....	Schroeder Hall	117
Engineering Physics 3-2 Program.....	Moulton Hall.....	210

Environmental Systems Science and Sustainability	Felmley Hall	206
Geography	Felmley Hall	206
Geology	Felmley Hall	206
History/Social Science Education.....	Schroeder Hall	115
Journalism.....	Fell Hall	280
Languages, Literatures, and Cultures.....	Stevenson Hall	231B
Legal Studies	Schroeder Hall	207
Mass Media	Fell Hall	280
Mathematics.....	State Farm Hall of Business.....	131
Molecular Biology	State Farm Hall of Business.....	133
Philosophy	Schroeder Hall	106
Physics.....	Moulton Hall.....	210
Politics and Government.....	Schroeder Hall	207
Pre-law	Schroeder Hall	207
Psychology	Schroeder Hall	212
Public Relations	Fell Hall	280
Social Work	Schroeder Hall	208
Sociology	Schroeder Hall	204
Sports Communication.....	Fell Hall	280

College of Business

Accounting	State Farm Hall of Business.....	CAT Auditorium
Business Administration	State Farm Hall of Business.....	CAT Auditorium
Business Information Systems	State Farm Hall of Business.....	CAT Auditorium
Business Teacher Education	State Farm Hall of Business.....	CAT Auditorium
Finance.....	State Farm Hall of Business.....	CAT Auditorium
International Business	State Farm Hall of Business.....	CAT Auditorium
Insurance and Law	State Farm Hall of Business.....	CAT Auditorium
Management	State Farm Hall of Business.....	CAT Auditorium
Marketing	State Farm Hall of Business	CAT Auditorium

College of Education

Early Childhood Education.....	Schroeder Hall	244
Elementary Education.....	Schroeder Hall	244
Middle Level Teacher Education	Schroeder Hall	244
Special Education	Moulton Hall.....	208

College of Engineering

Genreal Engineering	Williams Hall	111
Electrical Engineering	Williams Hall	111
Mechinanical Engineering.....	Williams Hall	111

Wonsook Kim College of Fine Arts

Art.....	Schroeder Hall	112
Creative Technologies	Schroeder Hall	102
Dance.....	Schroeder Hall	103
Music.....	Schroeder Hall	108
Theatre and Film	Schroeder Hall	103

Mennonite College of Nursing

Nursing.....	Schroeder Hall	211
--------------	----------------------	-----

Interdisciplinary Studies

Data Science	Schroeder Hall	206
Undeclared	State Farm Hall of Business.....	149

WHO YOU SHOULD TALK TO? AND WHAT YOU SHOULD TALK TO THEM ABOUT ...

Paying for college

Office of Financial Aid

Scholarships, loan options, grants, covering your college costs

Student Accounts

Setting up a payment plan, paying your bill

Wellness

Student Health Services and Insurance

Doctor visits, medications, Health Promotion and Wellness Wellness programing and resources

Student Counseling

Therapy

Campus Recreation

Intramural sports, Outdoor Adventure, working with campus rec, fitness, bowling, gaming, and obtaining a student job

Living on campus

Housing

Room/roommate selection, move-in questions, what to bring to campus

Dining

Meal plan options, dining portal, dining locations, allergy friendly dining, flex dollars, student employment opportunities

Parking and Transportation

Where to park, how to purchase a parking permit and register a vehicle, public transportation, motorist assist program

Redbird Card ID

Using your Redbird card, adding funds to it

Academic support

Julia N. Visor Center

Academic support, study groups, writing help, strategy workshops, developmental and transitional courses

University College Academic Advisement

Course planning, adding/dropping classes

Student Access and Accommodations

Academic accommodations like IEPs and 504 Plans; support services like tutoring, coaching, etc.

Registrar's Office

Academic deadlines, adding and dropping classes, FERPA, updating contact information, transferring credits

Textbooks and class materials

Milner Library

Redbird Spirit Shop

Textbooks and Redbird gear

Student involvement

Dean of Students Office

Clubs, organizations, Fraternity and Sorority Life

Redbird Life

Find organizations and events

Multicultural Center

Cultural student organizations, multicultural resources

Civic engagement

Volunteer opportunities

Student employment

Human Resources

On- and off-campus federal work study job opportunities, on-campus student employment

Technology

TechZone

Computer and technology sales, technology service and support

Campus safety

Emergency Management

Emergency alerts, preparedness trainings

Campus Police

Self-protection, substance use on campus, Redbird Safe Walk

Safe Redbirds App

Safety alerts, Redbird Safewalk



Watty: Watterson Dining Commons

The Quad: The heart of Illinois State

CPA: Center for the Performing Arts

Hew-Man: Hewett and Manchester halls

Tri-Towers: Wright, Wilkins, and Haynie halls

RSO: Registered student organization

MCC: Multicultural Center

BBC: Bowling and Billiards Center

The Bone: Bone Student Center

Canvas: The learning management system at Illinois State. Access course materials, homework, and contact your professors through Canvas.

ULID: Your username and the first part of your @IllinoisState.edu email address

UID: Your nine-digit identification number for campus

FERPA: Family Educational Rights and Privacy Act

FAFSA: Free Application for Federal Student Aid

Gen eds: General education classes that cover topics within the arts and sciences and serve as a foundation for advanced learning.

Major: A student's chosen area of study

Minor: A minor requires fewer credits than a major but allows for directed study.

Core requirements: The classes that students must pass within their degree program in order to graduate. Electives typically complement core classes.

Electives: Classes that students can take in any subject they find interesting

GPA: Grade point average

Practicum: A professional learning experience geared toward helping students build real-world, practical skills

BEFORE YOU LEAVE CAMPUS ...

Do a classroom walk-through

Now that you have your schedule, take some time to walk to the buildings and classrooms where you will be. This will help ease anxiety the first week of classes!

Visit campus offices

Still have questions? Most campus offices are open Monday-Friday 8 a.m.-4:30 p.m. Use the afternoon time on Day 2 of Preview to connect with any offices you still have questions for.



SAFE REDBIRDS

Download the Safe Redbird App

Do you need directions to a campus building? Are you walking to your car alone after dark? Have you seen something you need to report to authorities? Would you know what to do if there was an emergency in your living space? The Safe Redbirds app can help with all of these.

Students can also register for emergency alert texts in their My.IllinoisState.edu portal. Family and community members can text ISUAlerts to 67283 to receive text alerts.

WELCOME TO CAMPUS

LINKINS
DINING
CENTER



MULTICULTURAL
CENTER

STUDENT
FITNESS
CENTER

OFFICE OF
RESIDENTIAL
LIFE

STATE FARM
HALL OF
BUSINESS

MCCORMICK
HALL

FELL
HALL

CENTER FOR THE
PERFORMING
ARTS

STEVENSON
HALL

SCHROEDER
HALL

BONE
STUDENT
CENTER

BONE
STUDENT
CENTER
PARKING

MILNER
LIBRARY

FELMLEY
HALL

OFFICE OF
ADMISSIONS

JULIAN
HALL

WATTERSON
TOWERS

WATTERSON
DINING
COMMONS



OFFICE OF
SUSTAINABILITY

MANCHESTER
HALL

HEWETT
HALL

LOT G67
PREVIEW
PARKING

BEAUFORT STREET

MAIN STREET

COLLEGE AVENUE

UNIVERSITY STREET

SCHOOL STREET

FELL AVENUE

UPTOWN

MAIN STREET
CORRIDOR

Access the campus map on your
phone at [Maps.IllinoisState.edu](https://maps.illinoisstate.edu).

UNIVERSITY COLLEGE

YOUR ACADEMIC JOURNEY STARTS HERE.

Academic advising at Illinois State is an integral part of the educational process. Working in partnership with advisors, students learn about academic policies, procedures, and university resources to develop strategies to pursue their individual educational goals. By the end of their first year in University College academic advising, all students will be able to:

1. Navigate the academic advising partnership
2. Identify their academic requirements and their individual plan of study
3. Learn how to utilize the technology systems required to be a successful student
4. Engage in various campus resources and learn how they can enhance their academic and personal experiences
5. Discover involvement opportunities on campus to develop a sense of community and belonging
6. Develop self-advocacy
7. Reflect on why they are in college

Academic Advisement

Departmental or school advisement

Undergraduate students with a declared major who have earned 24 or more semester hours meet with their departmental or school advisor.

University College academic advisement

All undergraduate students who have earned less than 24 semester hours of credit, and all students who are undeclared or unclassified meet with their University College academic advisor.

Honors program advisement

Undergraduate students in the Honors program will meet with their assigned Honors advisor.

Academic advising, including athletics and pre-health professions advising

340 Fell Hall
(309) 438-7604

Developmental math

118 Schroeder Hall
(309) 438-3360

First-year seminars

(Thrive, Transfer Student Seminar)
012 Vrooman Center
(309) 438-7100

Julia N. Visor Academic Center

012 Vrooman Center
(309) 438-7100

Preview (orientation)

108 Williams Hall
(309) 438-8486

Probation, dismissal, reinstatement, and retention services

324 Fell Hall
(309) 438-3217

Orientation and training services

108 Williams Hall
(309) 438-8486

TRIO/student support services

346 Fell Hall
(309) 438-2099

University studies and interdisciplinary studies majors

340 Fell Hall
(309) 438-3217

General Education courses by category

Communication and Composition (2 courses required)

- ENG 101 or ENG 101A10
- COM 110

Choose one option from this group:

Mathematics (1 course required)

- MAT 102
- MAT 102A01
- MAT 104
- **MAT 113**
- **MAT 113A01**
- MAT 119
- **MAT 120**
- **MAT 130**
- MAT 144
- **MAT 145**

Talk to your advisor about what Math course to choose for Mathematics:

Science (2 courses required from two different sciences)

- | Natural sciences | Natural science alternatives |
|------------------|------------------------------|
| • BSC 101 | • BSC 196 |
| • CHE 102 | • BSC 197 |
| • GEO 102 | • CHE 110/CHE 112 |
| • GEO 103 | • CHE 140 |
| • PHY 102 | • PHY 105 |
| • POL 103 | • PHY 108 |
| • SOC 103 | • PHY 110 |

Talk to your advisor about which Science grouping you are choosing from (NS or NSA) and rank your top three choices:

United States Traditions (1 course required)

- | | |
|-------------------|-------------------|
| • ENG 131 | • LAL 109 (IDEAS) |
| • FCS 112 (IDEAS) | • MUS 156 (IDEAS) |
| • GEO 142 | • SED 101 (IDEAS) |
| • HIS 111 | • SOC 109 (IDEAS) |
| • HIS 131 | • SOC 111 |
| • HIS 135 | • SOC 112 (IDEAS) |
| • HIS 136 | • TCH 104 |

Rank your top four choices for UST:

Individuals and Civic Life (1 course required)

- | | |
|-----------|-------------------|
| • ANT 176 | • KNR 175 |
| • CJS 102 | • LGS 102 |
| • CJS 105 | • PHI 104 |
| • COM 183 | • PHI 214 |
| • ENG 183 | • POL 101 |
| • IDS 119 | • POL 106 |
| • IDS 231 | • SOC 106 (IDEAS) |
| • IDS 232 | • SOC 241 |

Rank your top four choices for ICL:

Fine Arts (1 course required) *

- ART 155

• ART 156

• ART 175 (IDEAS)

• ART 176

• ART 275 (AMALI)

• ART 282

• DAN 152

• MUS 152

• MUS 153 (AMALI)

• MUS 154 (AMALI)

• MUS 157

• MUS 159
- MUS 275 (AMALI)

• MUS 275A01 (AMALI)

• THE 105 (IDEAS)

• THE 152

• THE 154 (IDEAS)

• THE 176A01

• THE 176A02

• THE 213

• THE 275A01 (AMALI)

• THE 275A02 (AMALI)

• WGS 177 (IDEAS)

* Talk to your advisor about using Musical Ensemble credits to complete your Fine Arts group.

Humanities (1 course required)

- ENG 110

• ENG 130

• ENG 150

• ENG 160

• ENG 165 (IDEAS)

• ENG 170

• ENG 206 (AMALI)

• ENG 229

• ENG 250

• ENG 251

• ENG 261

• HIS 101

• HIS 102

• HIS 104A01 (AMALI)

• HIS 104A02 (AMALI)

• HIS 104A03 (AMALI)
- HIS 104A04 (AMALI)

• HIS 104A05 (AMALI)

• HIS 104A06 (AMALI)

• HIS 105

• HIS 107

• HIS 285

• IDS 112

• IDS 203 (AMALI)

• IDS 213

• LAN 206 (AMALI)

• PHI 101

• PHI 150

• PHI 202

• PHI 224

• PHI 238

• PHI 251

Language in the Humanities (1 course required)

- COM 128

• ENG 124

• ENG 125

• ENG 128

• FRE 116

• GER 116

• IDS 121

• IDS 212
- IDS 254

• ITA 116

• JPN 116 (AMALI)

• LAN 125

• LAN 125A01 (AMALI)

• LAN 128

• SPA 116

• SPA 120

Rank your top four choices for FA:

Rank your top four choices for humanities:

Rank your top four choices for language in the humanities:

Quantitative Reasoning (1 course required)

- BE 141/FIL 141

• ECO 138

• GEO 138

• HSC 204

• MAT 121

• MAT 131

• MAT 146
- MAT 150

• MGT 100

• NUR 138

• PHI 112

• PHY 117

• POL 138

• PSY 138

Rank your top four choices for quantitative reasoning

Science, Mathematics, and Technology (1 course required)

- AGR 120

• AGR 203 (B.S.-SMT)

• ANT 102

• ANT 105

• ANT 201

• BSC 145 (B.S.-SMT)

• BSC 160 (B.S.-SMT)

• BSC 170 (B.S.-SMT)

• CSD 212

• FCS 208

• GEO 202 (B.S.-SMT)

• GEO 207 (B.S.-SMT)

• GEO 211 (B.S.-SMT)
- HSC 156

• HSC 206 (AMALI)

• HSC 208

• HSC 209 (IDEAS)

• IDS 265

• IT 140

• IT 214

• KNR 208

• PHY 205 (B.S.-SMT)

• PHY 207 (B.S.-SMT)

• PHY 208 (B.S.-SMT)

• TEC 170

• TEC 275

Rank your top four choices for science, mathematics, and technology:

Social Sciences (1 course required)

- AGR 201

• ANT 143/ENG 143/LAN 143

• ANT 185 (AMALI)

• ANT 197

• CJS 101

• CSD 115

• ECO 101

• ECO 102

• ECO 103

• FCS 222 (AMALI)

• FCS 224

• GEO 135 (AMALI)

• GEO 235 (AMALI)
- HSC 170

• IDS 111

• IDS 113

• IDS 117

• MGT 120

• POL 140 (AMALI)

• PSY 110

• PSY 223/SOC 223

• SOC 108

• SOC 195

• SOC 220 (AMALI)

• WGS 120 (IDEAS)

Rank your top four choices for social sciences:

Course finder

Scan this QR code to go to Course Finder for more information about General Education course options.



General Education exemptions

Major	Sequence	Exemption	Major	Sequence	Exemption
College of Applied Science and Technology (CAST)			College of Arts and Sciences (CAS)		
AGR All programs QR	ANT All programs None
CJS All programs None	BSC All programs SMT
FCS Fashion Design and Merchandising None	CHE All programs SMT
 Food, Nutrition, and Dietetics None	COM All programs QR
 Human Development and Family Science SS	CSD All programs SMT
 Interior Design SS	ECO All programs QR
 Teacher Education None	ENG All programs LH
HSC Environmental Health QR	GEL Geology SMT
 Health Information Management SMT	GEO Geography SS
 Health Leadership SMT	 Environmental Systems and Science and Sustainability QR
 Health Promotion and Education ICL	HIS All programs UST
 Medical Lab Science SMT	IDS European Studies LH
 Safety SMT	LLC French all sequences H
IT All programs SMT	 German all sequences H
KNR All programs SMT	 Spanish all sequences H
TEC Construction Management SMT	MAT All programs SMT
 Engineering Technology SMT	PHI All programs H
 Graphic Communications SMT	PHY All programs SMT
 Computer Systems SMT	POL All programs None
 Sustainable and Renewable Energy None	PSY All programs SS
 Tech and Engineering Education SMT	SOC All programs None
			SWK (B.S.W.) None
College of Business (COB)			Mennonite College of Nursing (MCN)		
COB All programs SS	NUR All programs (1 course only) NS
College of Education (COE)			Wonsook Kim College of Fine Arts (CFA)		
SED All programs None	ART All programs FA
TCH Early Childhood Education SS	ATK All programs FA
 Elementary Education QR	MUS All programs (Except Teacher Education) FA
 Middle Level Education SS	 Music Teacher Education SS
			THD All programs FA



Changing majors?

Keep in mind that if you change majors, your general education exemption can change.

Communication and composition requirements

ENG 101
Class size: 23 1 instructor
May appeal to students who:

- Read regularly for school or pleasure
- Are disciplined and motivated
- Consider themselves good readers

OR

ENG 101A10
Class size: 18 1 instructor
1 writing consultant
May appeal to students who:

- Read only when required
- Need assistance getting started/staying motivated
- Do not consider themselves good readers

COM 110
Class size: 25 1 instructor
Students will:

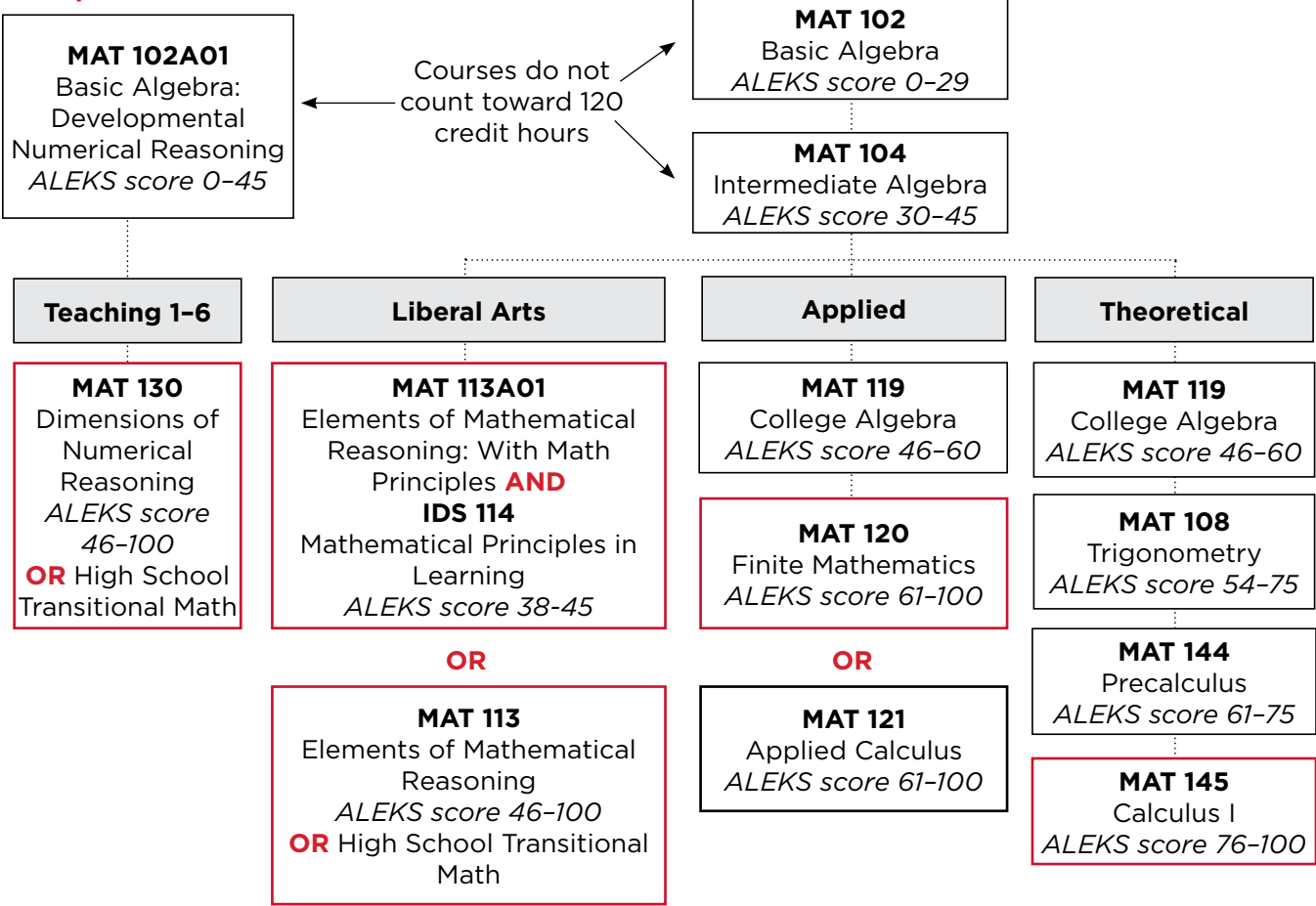
- Learn to communicate effectively in group settings
- Build public speaking skills

Both courses should be completed by the end of your freshman year.

ENG 101 or 101A10: _____

COM 110: _____

Math placement and General Education requirements



Language Requirements

- LAN 112 College of Arts and Sciences (CAS) majors (CAS majors requirement)**
- Three years of the same language in high school OR
 - Completion of one semester or higher of college-level language with a passing grade (LAN 112)

- LAN 115 Bachelors of Arts (B.A.) degree requirements (B.A. requirement)**
- Knowledge of a language as demonstrated by successful completion of LAN 115, or the equivalent

- LAN 116 General education—language in the humanities (LH GEN ED.)**
- Taking a LAN 116 level course will fulfill the General Education Language in the Humanities category.

CAS Departments/ Schools

Biology; Chemistry; Communication Sciences and Disorders; School of Communication; Economics; English; Geography, Geology, and the Environment; History; Languages, Literatures, and Cultures; Mathematics; Philosophy; Physics; Politics and Government; Psychology; School of Social Work; Sociology and Anthropology



Do you speak a language not offered at Illinois State? We have alternative options for you!

Placement tests

- Available for the following languages: Spanish, French, German, and Italian. Visit Lan.illinoisstate.edu/academics/placement-exams/ for details

Available languages

- Chinese, French, German, Italian, Japanese, Latin, and Spanish

Credit for acquired proficiency (CAP) credit

- Students who begin at the 112 level or higher and earn a C or better are eligible to earn CAP credit for up to eight hours.

Your Redbird schedule

TIME	MONDAY	TUESDAY	WEDNESDAY	THURSDAY	FRIDAY
8-9 a.m.					
9-10 a.m.					
10-11 a.m.					
11 a.m.-noon					
Noon-1 p.m.					
1-2 p.m.					
2-3 p.m.					
3-4 p.m.					
4-5 p.m.					
5-6 p.m.					
6-7 p.m.					
7-8 p.m.					
8-9 p.m.					

YOU COMPLETED PREVIEW AND ARE OFFICIALLY A REDBIRD! SO WHAT’S NEXT?

Before move-in

Submit final documents to Admissions

Check in your My.IllinoisState.edu portal to see if you still need to complete one or more of the steps below to finalize your admission:

- Submit ACT/SAT scores.
- Submit your final high school transcript.
- Submit any official college transcripts if you took dual credit classes in high school.
- Submit any advanced placement or international baccalaureate test scores.
- Visit Registrar.IllinoisState.edu/Registration/Exams for additional information.

File your FAFSA and review your financial aid offer

To be considered for financial aid at Illinois State, you must file a FAFSA each year. Once your FAFSA is filed and processed by Illinois State, your offer letter will be available electronically on your student portal. Visit the Financial Aid Office website at FinancialAid.IllinoisState.edu to learn more about filing the FAFSA, scholarships, and other financial aid options.

View and pay your bill

Each semester, students have the option of paying in full or signing up for a payment plan. At the beginning of each semester, you must either pay your tuition and fees in full or make the first payment for your selected plan. On-demand statements can be viewed online any time by students and authorized users. Paper statements are not mailed out. You can learn everything you need to know about tuition, fees, rates, billing due dates, setting up an authorized user, and payment options on the Student Accounts website at StudentAccounts.IllinoisState.edu.

Choose your meal plan and select your room

All students living in the traditional residence halls (Haynie, Hewett, Manchester, Watterson, Wilkins, Wright) must purchase a meal plan, which is managed through Event Management, Dining, and Hospitality. Students can view plan options and access their Housing and Dining

portal by visiting Dining.IllinoisState.edu/meal-plans.

Students who have completed their housing contract will receive information regarding their online selection date or the next steps via email mid-June. You can find more information about room selection, roommates, and move-in at Housing.IllinoisState.edu.

Submit your immunization records

All students must have proof of health immunizations on file with Student Health Services by the start of the semester. Students not in compliance will receive a class registration block and are subject to a \$75 late processing fee. Students may not register for any new classes until they have met all immunization compliance requirements. Immunization records can be uploaded into your secure health portal. Visit IllinoisState.edu/Immunization to access your health portal and to view a list of immunizations required by the State of Illinois.

Secure health insurance

The University offers a health insurance plan that is included in tuition/fee costs, which either supplements existing coverage or serves as primary coverage for students with no other insurance. For more information about the benefits of student health insurance or keeping versus canceling the coverage if you already have insurance, visit IllinoisState.edu/Insurance or call (309) 438-2515. If you want to cancel student insurance, it must be done each semester prior to the 15th calendar day of the fall and spring semesters, and the eighth calendar day of the summer semester.

Review parking and transportation options

Residence hall students are eligible to purchase a parking permit, which will allow them to store their vehicle on campus while residing in the campus residence halls. Student storage permits are valid in the designated/assigned parking lots only. Illinois State University offers multiple bus services to students of Illinois State University, to transport them not only around campus but also throughout the greater Bloomington-Normal area. All services are free with a valid Illinois State ID. To learn more about parking permits and prices, transportation maps, and bus schedules, visit Parking.IllinoisState.edu.

Visit Uptown Normal

Uptown Normal is home to world-class cultural attractions, state-of-the-art public facilities and a dynamic mix of shops, restaurants and businesses. Explore all Uptown has to offer.



Illinois State also offers convenient access to transportation options for students traveling to and from the Chicago and St. Louis areas. Peoria Charter Coach provides daily bus stops in Uptown Normal. More information can be found at PeoriaCharter.com. Uptown Station also offers daily train routes through Amtrak. More information is available at Amtrak.com.

Learn about voter registration

Visit CivicEngagement.IllinoisState.edu/vote to learn about how to get registered to vote during your time at Illinois State.

Your time on campus

Parking

Parking is available in lot G67 for both Day 1 and Day 2, as well as overnight for students and guests who are staying overnight in the residence hall. Parking in other lots may result in your vehicle being ticketed.

Overnight accommodations

Students and guests who wish to stay overnight on campus may do so. Reservations are not required for this; rooms will be assigned during the housing check in at 4:15 p.m. The cost for the overnight stay is \$58.18 per person. Parents and guests will be housed in a different building than students. If students have a preferred roommate for the night, please check in for your room together. The overnight stay includes dinner and breakfast in the dining center. Fees for the overnight stay will be applied to the student's account and will be payable on the fall bill.

Meals

On Day 1, students will eat lunch in the dining center with their Preview groups. Parents and guests will be on their own for lunch; there are several options in the Bone Student Center as well as in nearby Uptown Normal. Dinner is available in Watterson Dining Commons for a fee. Breakfast is available in the dining center for those who stay overnight on campus only.

Questions

Preview staff will be around campus throughout the day. Feel free to ask any of our staff your questions. You can also reach out to the Preview Office at (309) 438-8486 or email us at Preview@IllinoisState.edu.



**ILLINOIS STATE
UNIVERSITY**
Illinois' first public university

If you need a special accommodation to fully participate in this program/event, please contact University College at (309) 438-8486. Please allow sufficient time to arrange the accommodation.

An equal opportunity/affirmative action university encouraging diversity

UNIVERSITY MARKETING AND COMMUNICATIONS 25-32320 printed on recycled paper ♻️